

Angular Contact Ball Bearings

Bearing No. : **NACHI 7212C**

■ Bearing Type

■ Clearance

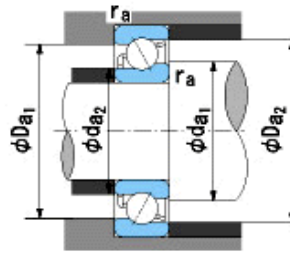
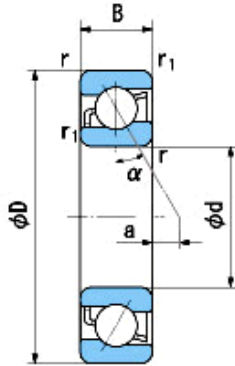
■ Tolerance Class

Dimensions

Dimensions

d = 60 0
-0.015
D = 110 0
-0.015
B = 22 0
-0.150
r = 1.5~2.3
(Radial Direction)
r = 1.5~4
(Axial Direction)
r1 = 1~1.9
(Radial Direction)
r1 = 1~3
(Axial Direction)
a = -1.2

da1(min) = 69
da2(min) = 69
Da1(max) = 101
Da2(max) = 104.6
ra(max) = 1.5
ra1(max) = 1
Mass = 0.820 kg



Basic Dynamic Load Rating Cr :	64,500 N
Basic Static Load Rating Cor :	49,500 N
Limiting Speed ;	
Grease Lubrication :	9,400 min ⁻¹
Oil Lubrication :	13,000 min ⁻¹

	INNER RING	OUTER RING
O.D.Surface Runout with Side :		-
Axial Runout with Bore :	-	
Axial Runout with Raceway :	-	
Width Variation :	0.025	0.025
Radial Runout :	0.020	0.035